

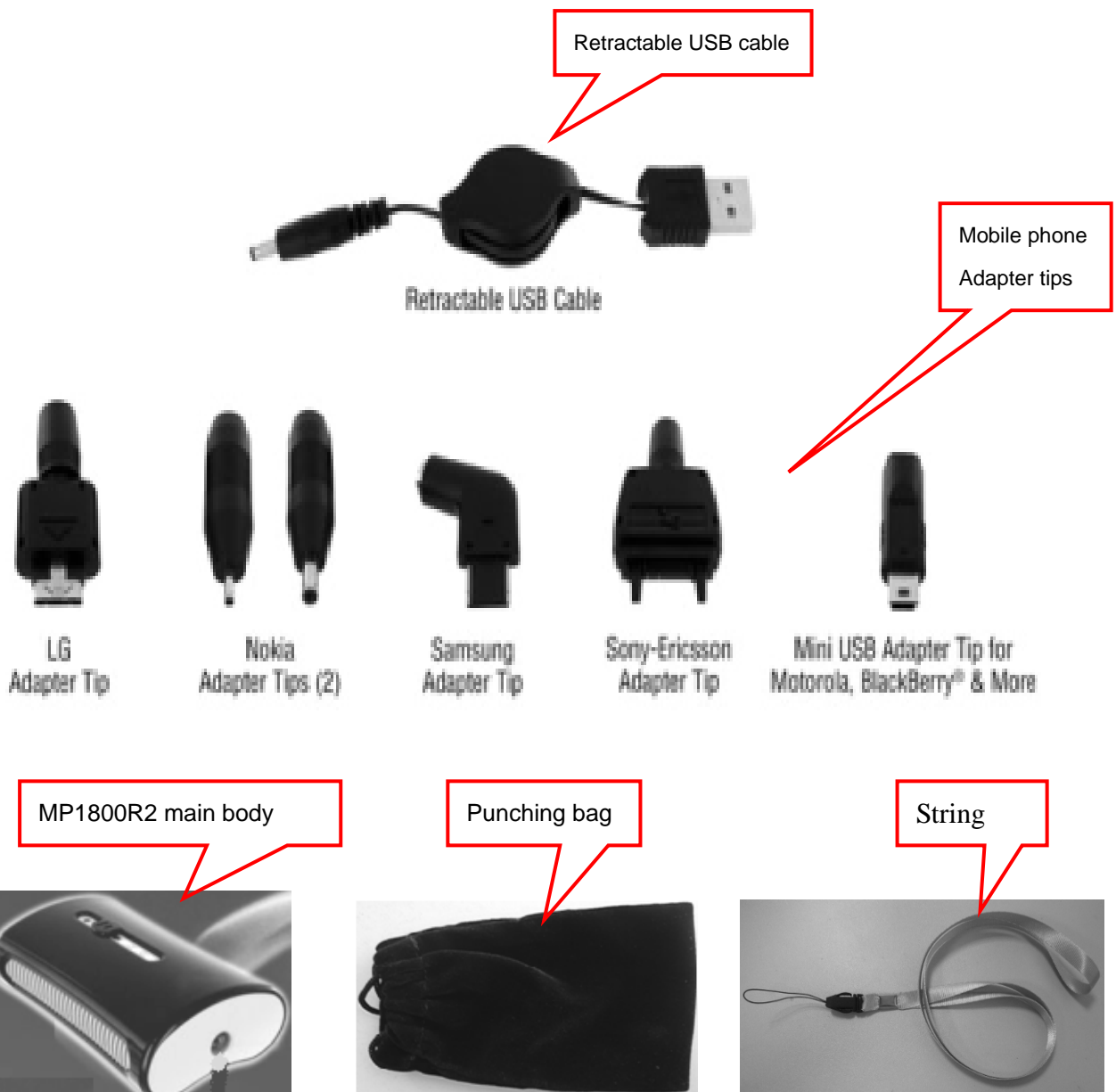
# MP1800R2 user guide

## ◆ Product overview

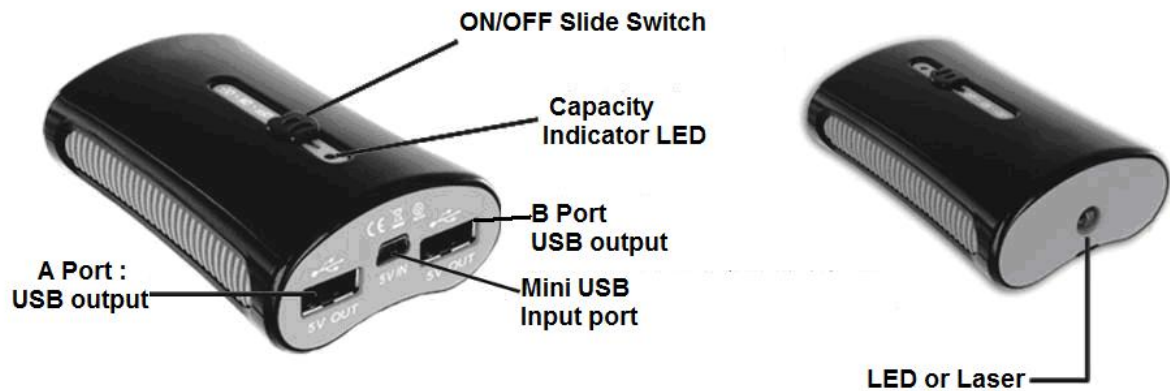
MP1800R2 is a lightweight universal rechargeable battery, you can enjoy hours of extended time on mobile phone ,iphone/ipod, ipad , MP3/MP4, PDA,PSP and other portable consumer electronic products. With MP1800R2 , making it a versatile solution for the power needs of mobile products in any time anywhere.

## ◆ Standard package

- 1 · MP1800R2 main body
- 2 · Mobile phone adapter tips(mostly)
- 3 · Retractable USB cable
- 4 · Punching bag and string



## ◆ Illustration description



1. Slide switch: Three status( OFF/ON/LED)  
OFF status: White LED is not light, USB port has no output voltage.  
MP1800R2 does not consume power.  
ON status: White LED no light, USB port has output voltage.  
LED/Laser status: White LED /Laser will light. USB port has output voltage.
2. Capacity indicator LED: There are two different colors(blue & orange) to indicate the capacity status .
3. Mini USB input port: Charging for MP1800R2 with this port;  
Charging voltage /current: 5V/0.6 ~0.9A °  
The charging current depends on the output current capability of the power adapter 's USB port. The charging current will be 0.9A for MP1800R2 if the power adapter can offer 0.9A output current . The charging current will be 0.6A for MP1800R2 if the power adapter's output current only can offer 0.6A. The power adapter's current is more stronger , the charging time will be shorten. The charging time is 5~8 hours depend on the output current capability of Power adapter USB's.
4. Dual USB output port: A Port USB output : 5.0V ~5.2V ; B Port USB output : 5.2V ~5.4V ;  
The two USB's total current can not be over 2A. A port is suitable for iphone/ipod/ipad. B port is suitable for Nokia mobile phone.
5. While LED or Laser : Can be used as pocket light or laser indication function(MP1800R2 with two version ; one is LED lighter version . Another is Laser indicator version).

## ◆ Specification

Weight: 125g

Dimension: 90mm(L)\*54mm(W)\*28mm(H)

Cell style: Li-ion 18650 type

Capacity: 4500mAh

A port's output voltage: 5.0~5.2V

B port's output voltage: 5.2~5.4V

A port + B port total current: 2A

Charging voltage/current: 5V/0.6 ~0.9A °

Charging time: 5 ~ 8 hours

Output power: 15W

Temperature range: -20℃ ~ +60℃

Cycle life: more than 500 cycles

Working time:

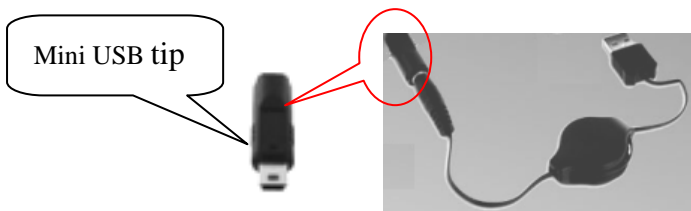
★iphone: charging for 2 ~3 times	★mobile phone: charging for 5 times
★micro-projector: 2~3 hours	★PSP/MP4: 8 hours
★DV: 4 hours	★IPOD: 120 hours

## ◆ How to use:

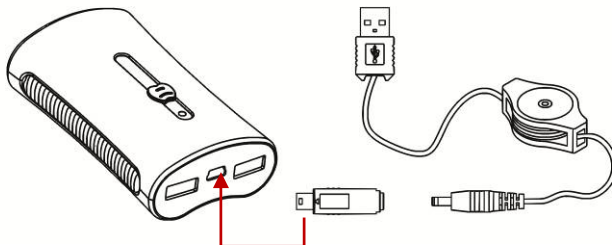
### A, Charging for MP1800R2

**You can charge for MP1800R2 whatever status the slide switch is.**

1. Select the proper Mini USB tip and connected with the retractable USB cable.



2. Plug the Mini USB tip into the Mini USB input charging port .



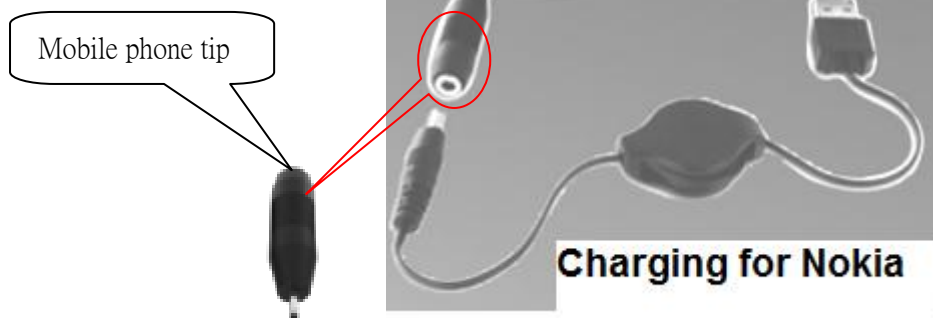
3. Use the USB port of Notebook or any USB Power adapter to charge for MP1800R2.



4. The indicator LED will light when connected to the power, The color of the indicator LED will change according to the capacity saturation level.
  - a. Charging: Orange
  - b. 80% fully charged: blue

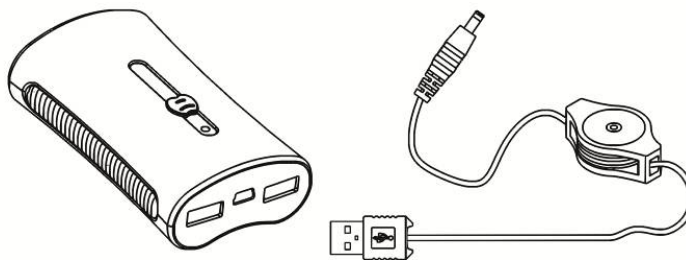
## B, Charging for your device with MP1800R2

1. Select the proper mobile phone tip to connect with the retractable USB cable.



- ◆ Plug it into the output USB port(A Port or B Port), please using A port to charge for iphone/ ipod/ipad , iphone can be charged into 80% capacity within one hour. Please using the B port to charge for Nokia mobile phone.

- 1.



2. Connect to your device, and slide the switch at ON status. The indicator LED will light to show the capacity status. At this time, MP1800R2 is charging and supplying power to your electrical device.



3. The indicator LED will display different color according to the remaining capacity.
  - a. Over 10% capacity: blue
  - b. Lower 10% capacity: orange. You should charge for MP1800R2 in time.
4. Please push the switch at OFF status to save power when MP1800R2 is idle.

## ◆ Troubleshooting

Please use the following steps if MP1800R2 can not charge for your device.

- 1 · Verify that MP1800R2 has been completely charged.
- 2 · Check that the USB charging cable is connected well with MP1800R2 main body, and check whether the tip is suitable for the power socket of your device, if not, please replace another tip.
- 3 · Check your the digital device is installed the battery ( Some digital device can not work if not installed battery )
- 4 · Check whether your digital device is designed with charging input voltage limited circuit, if so, MP1800R2 maybe can not charge and power for the device.

## ◆ Warranty

Your MP1800R2 R2 is guaranteed against original defects in materials, manufacture and workmanship for **one year** from the date of purchase.

## ◆ Notes

Purchase invoices, warranty certificate and complete product composition is that you get the standard service vendors, including product warranty rights of the certificate, please keep well. In order to provide the warranty service, please be sure to show the relevant documents. If you can not get a valid product warranty information, the company will not provide the standard services of company.